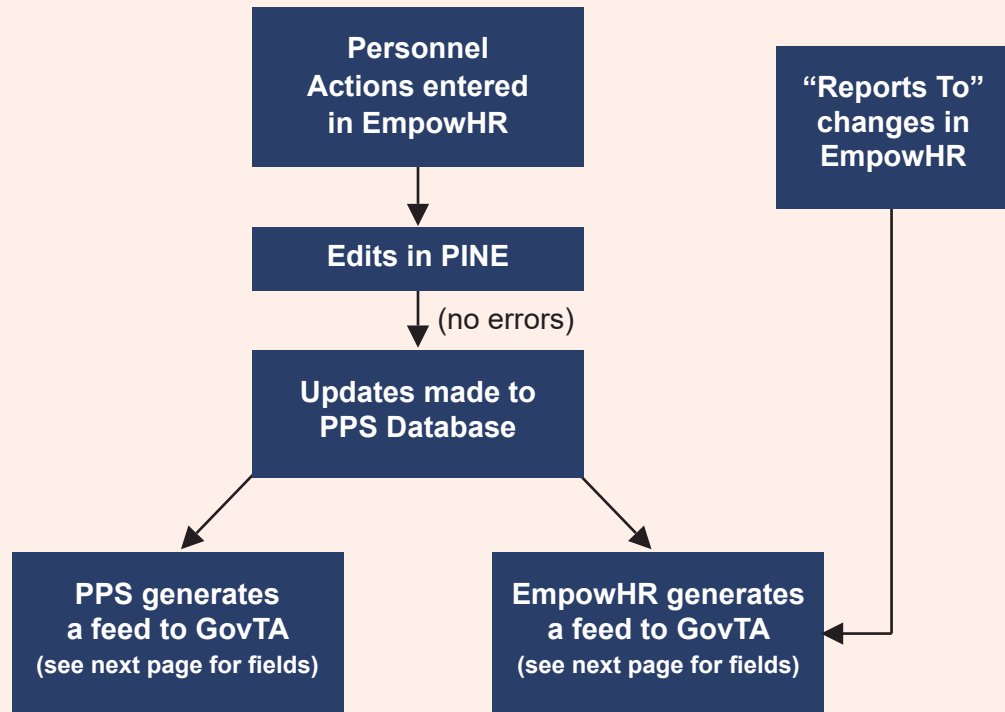




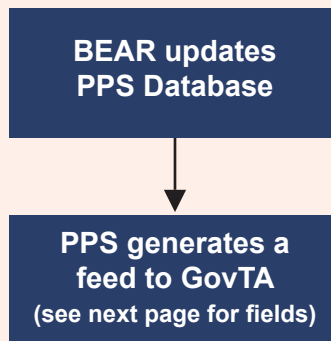
# GovTA Integration (USDA Only) Quick Reference Card

## Integration Processing Flowchart

(Daily EmpowHR and PPS Feed Process)



(Biweekly PPS Feed Process)



The feeds listed below integrate with GovTA and are described on the subsequent pages.

- Daily Payroll/Personnel System (PPS) feed
- Daily EmpowHR feed
- Biweekly PPS feed (end of processing pay period)
- Weekly Table Management System (TMGT), Table 005 Agency Organizational Structure
- Daily Financial Management Modernization Initiative (FMMI) feed

## GovTA Integration Feeds

### PPS Daily Feed

The PPS daily feed updates GovTA for accessions and separations as follows:

- All employees with accession Nature of Action Codes (NOACs) will be loaded into GovTA, and the employee profile will be created.
- All employees with separation NOACs will be set in GovTA with the FINAL flag in the employee profile. If the flag is already set in GovTA manually by the Timekeeper, no action is taken by the feed. The user account is inactivated at the end of the pay period. Employees transferring between Agencies will be handled manually.

### PPS Biweekly Feed

The PPS biweekly feed updates GovTA as follows:

- Leave balances for Annual, Sick, Restored Annual, Credit, Shore, and Home
- Compensatory Time and Compensatory Time for Travel
- Time Off Awards
- Employee Profile Data (Pay Plan, Tour of Duty information, Work Schedule, and Service Computation Date (SCD))

### EmpowHR Daily Feed

The daily feed from EmpowHR transmits information that has changed through applied personnel actions or position data changes since the previous feed for the following fields.

- Agency
- Amount in Appointment Balance
- Appointment Type
- Appointment Expiration Date
- Business Phone Number
- COOP Designation/Indicator
- Days in Appointment Balance
- Department Code
- Department Description
- Detail Expiration Date
- Duty Station (City, State, County)
- Email Address
- Emergency Preparedness Participant Indicator
- Employee ID (EMPLID)
- Employee Type
- Employment Status
- End Date for Retirements/Separations/Terminations
- First Name
- FLSA Indicator
- Grade
- Hourly Pay Rate
- Hours in Appointment Balance
- Hours in Work Schedule
- Last Date Worked
- Last Name
- LWOP Expiration Date
- Middle Name
- Military Reserve Category
- NOA Effective Date
- Occupational Series
- Office Type
- Official Title
- Organization Levels
- Organization Titles
- POI
- Reports to (Supervisor (EMPLID)) \*
- Retirement Plan
- Salary Pay Plan
- SCD Leave Date
- SSN
- Start Date
- Step
- Supervisory Status Code
- Supervisory Status Code Description
- Telework Eligibility
- Temporary Position Change Expiration Date
- Temporary Promotion Expiration Date
- Work Schedule

\* **NOTE:** The Reports To field is being updated through the daily feed. If it is incorrect in GovTA, it should be corrected in EmpowHR only, not in GovTA.

## GovTA Integration Feeds

### Weekly Table 005 Feed Process

#### TMGT Table 005 Weekly Feed

The TMGT Table 005 weekly feed updates GovTA with organizational structures. The feed includes the deltas (add/modify/inactivate) from the previous feed. The feed only includes those records that are active with an end date equal to the date of the feed or later (none earlier) through the date of 12/31/49.

(Weekly Table 005 Feed Process)

Organizational  
changes are made  
in Table 005

Table 005 generates  
a file that is sent  
to GovTA

---

### Daily FMMI Feed Process

#### FMMI Daily Feed

The FMMI daily feed updates GovTA for the data below:

- GovTA Shorthand Codes that have been added
- GovTA Shorthand Codes that have been modified
- GovTA Shorthand Codes that have been deleted

Additionally for those USDA Agencies that opted to use Pay Period Start and End dates, GovTA will populate that data in GovTA.

(Daily FMMI Feed Process)

Shorthand codes  
added/deleted/  
modified in FMMI

Publish job is  
created and sent  
to GovTA